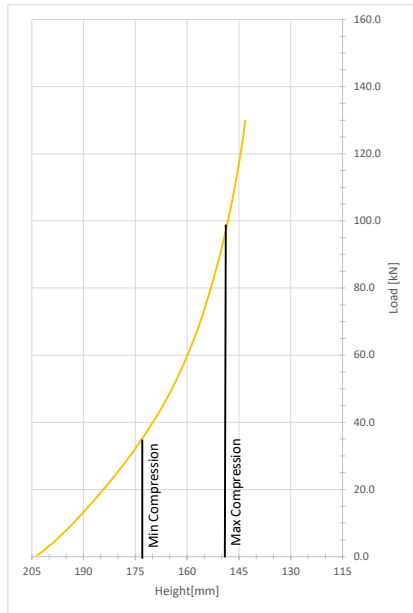
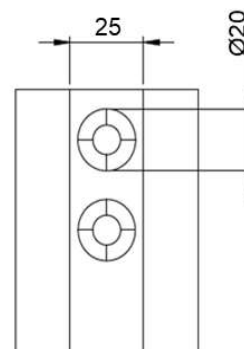
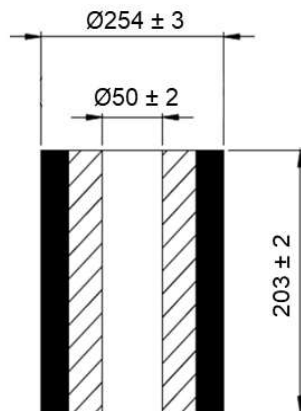


Continental SAM

DN 254 DH 203 IN 50



Compression [%]	15	20	22.5	25	27.5
Load [kN]	34.3	51.7	63.4	78.3	98.0
Height [mm]	174	164	159	154	149
Spring Rate [kN/m]	1489	2097	2639	3415	4636
Effective Deflection [mm]	23	25	24	23	21
Natural Frequency [Hz]	3.3	3.2	3.2	3.3	3.4
Maximum OD [mm]	277	287	292	297	302
Weight [Kg]	9.99				



Continental SAM is the solution for spring replacement and vibration isolation. With its resistant, durable and economical design it helps to cut costs in nearly all industrial applications.

- > better working conditions due to a dramatically reduced noise level
- > reduced downtimes
- > compact design
- > high load-bearing capacity
- > reliable even in damp or corrosive conditions
- > maintenance-free
- > safe due to the absence of moving parts
- > reliable even in extreme temperatures (-40°F to 167°F, -40°C to +75°C)